



ipConfigure Enterprise Surveillance Manager

Unlimited Cameras, Users and Locations

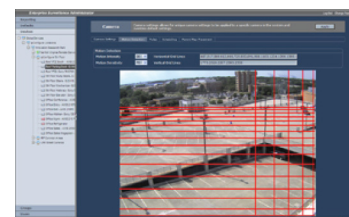
Enterprise Surveillance Manager (ESM) is designed for medium to large scale IP video surveillance applications and is capable of supporting unlimited cameras and locations in a centralized or distributed architecture. ESM leverages a browser interface eliminating the need to install or license client software to access live and recorded video.

The intuitive interface offers advanced map navigation of cameras, a multimonitor virtual matrix, an advanced search engine, and an alarm monitoring interface for real-time alerting. Administrator functions are also accessed through the use of a browser providing overall system management, reporting and control of all locations, devices and users.

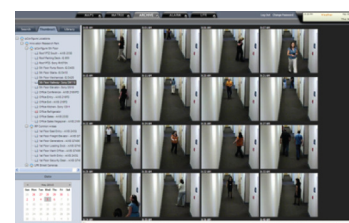
ipConfigure's products, based on open standards, which leverage commercial off-the-shelf (COTS) servers, switches, storage, and cameras. ESM can easily scale up and down to suit your current and future requirements.

Key Features of Enterprise Surveillance Manager

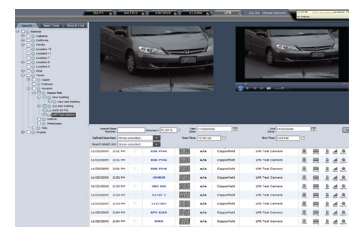
- Independent live and recording frame rates, resolutions, and compression provides optimization of bandwidth and image quality
- Cryptographic video hashing ensures the authenticity of archived video (H.264)
- Continuous recording with Motion Grooming enables longer retention times
- Thumbnail Search provides a visual representation of recorded events enabling quick searches
- Auto discovery of Axis cameras automatically populates camera's name and IP address into ESM
- User definable camera retention profiles of short, medium and long assignable to each camera
- No MAC address license key requirement allows administrators to freely change camera models
- Map multiple storage volumes per server and set maximum disk limits
- Built in reports for system health, camera health and user activity for audit purposes



Intuitive Motion Detection



Archive Thumbnail Search



License Plate Recognition

Live Map and Matrix View

- Browser interface supports unlimited users
- Map-based building and floor plan navigation of live cameras
- Location independent multi-camera live view
- Alarm monitoring interface for motion detection events
- Virtual matrix display and multi-monitor support
- RSS notifications for local and national alerts
- Create and share custom camera layouts
- Low bandwidth utilization for live feeds

Recording Features

- High camera to server ratio
- Configurable motion detection trip wires with depth perception
- User definable recording schedules per camera
- Support for MPEG-4, MJPEG, H.264 compression
- Configurable recording frame rates and resolutions
- Continuous recording with motion grooming

Playback Viewing Features

- Search video based on thumbnail images or timelines
- Single and multi-camera search
- Playback up to 16 cameras simultaneously
- Save video to the library to build a case file
- Export with evidence using a 512 bit hash file (H.264)

Management Features

- Active Directory or LDAP user management
- Email notifications of alerts and system reports
- User activity reports for audit trails
- Customize user interface features
- Assignable access to cameras and facilities
- Optional Features
 - Support for License Plate Recognition analytics
 - Integration of point of sale systems and RFID systems
 - Integration of access control systems and central monitoring stations

System Requirements

- Windows Server 2003 or 2008 Operating System. 32 or 64 bit (Server)
- Internet Information Services (Server)
- SQL Express or SQL Workgroups 2005 or 2008 (Server)
- Internet Explorer 6.0 or higher (Client)
- Adobe Flash Player (Client)
- Windows Media Player

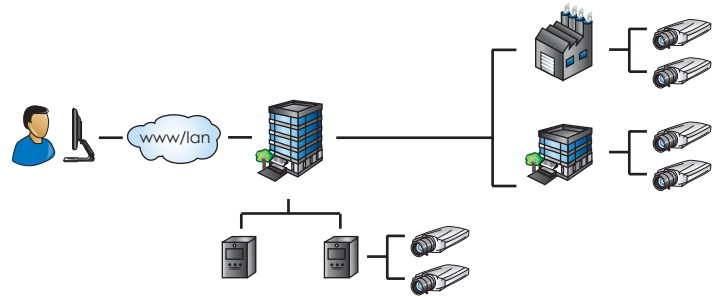
Standalone Architecture

The stand-alone architecture leverages a single server for the ESM software in conjunction with IP cameras or encoders on a local network. Depending on the processor and storage capabilities of the server up to 120 cameras can run on a single server.



Distributed Architecture

By leveraging separate management and recording servers, ESM's provides an extremely scalable and robust application for its customers.



Server(s) Specifications

	8-32 Cameras	32-64 Cameras	64-120 Cameras
Processor Min.	Xeon 5410 Quad Core *		
Sockets Min.	1	2	4
RAM Min.	4 GB	4 GB	8 GB
Storage Min.	1TB	2 TB	4 TB
OS	Windows Server 2003 or 2008 *		
OS Architecture	32 / 64 *		
Database	SQL Server Express 2005 or 2008 *		
Drive Type	SATA, SAS, SCSI *		

* APPLIES TO ALL CAMERA COUNTS

For more information please visit:

www.ipconfigure.com/enterprisesurveillancemanager_specifications.html